

La Prensa Texas

FREE • GRATIS

VOL. 8 • NUM 03

www.LaPrensaTexas.com

19 de January de 2025



La Prensa Texas

This grass roots publication is the life source for a community that is not easily afforded viable access to diverse and accessible media. San Antonio and the surrounding counties have become accustomed to relevant news brought to them in both English and Spanish since 1913.

Yvette Tello

Publisher

y.tello@laprensatexas.com

Ramon Chapa Jr.

Community Liaison

r.chapa@laprensatexas.com

Roxanne Eguia

Editor In Chief

r.egua@laprensatexas.com

Nicodemus Gonzalez

Graphic Designers

Dr. Ricardo Rom

Henrietta Hernandez

Contributors

info@laprensatexas.com

José I. Franco

Editor Español

Maria Cisneros

Sales Representative

Sales Info:

Our Circulation

45,000 Printed

And Distributed Weekly

English And Spanish

Send Press Releases And

Advertising Inquiries To:

Info@LaPrensaTexas.com

2 1 0 - 6 8 6 - 0 6 0 0

Digital Team:

The Social Being



Let's Talk About It Is Capitalism Destroying the Environment?

By Yvette Tello

Capitalism has often been praised for fostering innovation and economic growth, but it also creates challenges when profit motives conflict with social good. Critics argue that clean energy, universal healthcare, and peace are sidelined because they threaten powerful industries' financial interests—oil, insurance, and weapons manufacturing, respectively. Supporters of capitalism counter that the system encourages competition and can adapt to prioritize solutions like renewable energy or affordable healthcare. Whether capitalism inherently prevents progress or has the flexibility to evolve depends on how it is regulated and whether public welfare takes precedence over profits. Do you think the system needs reform, or can it adapt organically? “We can't have clean energy because it will destroy the oil industry. We can't have healthcare because it will destroy the health insurance industry. We can't have peace because it will destroy the weapon industry. Capitalism built a system where we can't afford to do the right thing.” Do you agree with this? Why or why not? Let's talk about it...

Eva Pesce: “Capitalism is simply a system in which there is an open market, where the population of a nation or country is able to purchase goods and services of their own volition. Likewise, people can offer their own goods in exchange for monetary value. This isn't inherently a good or bad thing, the problem is when large corporations or people with a lot of wealth continue amassing it. A large issue with large companies and brands is that one of the few things to keep their unimaginable wealth in check are taxes, yet a lot of companies illegally liquidate funds within multiple umbrella companies to lessen their amount they need to pay. This is how companies like Apple, Google, or Facebook have more wealth than the majority of countries on this planet. Likewise, it's difficult to begin making money without having some in the first place, so it's small systematic errors like these which cause things like the shrinking middle class in America.”

Patrick Ehlert: “No, the biggest threat are greedy and selfish people who don't care about the environment, and people who are totally ignorant of the consequences of their actions on the environment. If any system is to blame I'd say it is consumerism (which is not the same as capitalism). Capitalism is an economic system where goods are owned by private individuals or by corporations. An alternative is Socialism, where the goods are owned by the state or by all people of a country. Both systems can have a positive or negative influence on the environment. Under capitalism, you have companies that try to maximize their profits by increasing sales and reducing costs. They dump waste in development countries to avoid costs and they make commercials that lure people into buying stuff they don't really need. It's the production, use and disposal of all this stuff that has a negative effect on the environment. Under socialism, bad things can happen as well. The socialist system doesn't say anything about how to properly manage and take care of ecosystems.

A good example is the Aral Sea that has almost completely dried up because in the 1960s the Soviet Union diverted water from the two rivers that fed the Aral sea in order to irrigate the desert. An often quoted (albeit very much simplified) formula that shows how people affect the environment is the IPAT equation: $\text{Impact} = \text{Population} * \text{Affluence} * \text{Technology}$ or a bit more verbose $\text{Impact on the environment} = \text{Number of people} * \text{Average consumption per person} * \text{impact per unit of consumption}$ Basically, this equation says that in order to reduce the impact on the environment, we either have to reduce the number of people, reduce the average consumption per person, or reduce the impact per unit of consumption (i.e. improve technology).”

Bernard Ching: “In our world when we speak of capitalism, socialism or communism we are speaking in pure terms and it really doesn't exist. The United States, in order to form a more perfect union and likewise economy used our brand of capitalism - The American Capitalism which has been refined through the years. The various refinements included federal controls like anti-trust acts. It creates changes through laws to set up a framework conducive for fair competition. At the same time it enhances the health and welfare of the workers. The gilded age presented many industrial giants who got wealthy at the expense of workers. Many Republicans complained we promote socialism when we have medicare, social security and various safety net programs for a segment of our citizens yet our government never nationalized any part of the industry or economy. Our brand of capitalism regulates the various sectors so an orderly economic structure can exist. Just look at our power grids, our water supplies, our banking industry, our transportation system. The government didn't build the power grids, it cooperated in irrigation by building dams to manage power and floods and built roads so every citizen along with trucking companies. Profit motive is important but an Adam Smith's type of laissez faire economy will not work in the United States. American Capitalism is not static, it evolves to fit the times and needs of its citizens.”

Marshall Solomon: “Yes. But it depends on the metric one uses to assess capitalism. Has capitalism produced a lot of wealth? Yes. Has capitalism produced wealth through violence and exploitation? Yes. Has capitalism produced enough food to feed the global population? Yes. Has capitalism led to millions of people starving to death every year? Yes. Has capitalism led to innovation and (relative) efficiency? Yes. Has capitalism led to environmental destruction through innovation and efficiency (Jevons Paradox)? Yes. In short, capitalism is full of contradictions. Wealth produces unconscionable poverty. Perfectly good food rots while people starve. Efficiency creates destruction. As some Christians attribute all that is good to God and all that is evil to man, some supporters of capitalism tend to attribute wealth creation to the economic system and poverty

to individuals. It is not the system that is failing. It is individuals unwilling to work hard and compete. Unemployment, for instance, is understood as a personal failure of individuals to go out “get a job.” It is never capitalism's failure to “create jobs.” People, apparently, get lazier during an economic crisis, according to this twisted logic. The system is always sacrosanct. Other supporters of capitalism pretend a unified economic system called “capitalism” does not really exist at all. There are only individuals competing in the market. Everyone is a capitalist to these people. Capitalism can't be failing because there is no such thing as capitalism, as such. All the failings of the supposed economic system are the result of individual “bad actors.” Both groups resemble cult members more than thinking people. Taken as a whole, capitalism is unequivocally failing the vast majority of people on the planet and the planet itself. The evidence is overwhelming. The correlation between capitalism and social pathology is strong. The United States has been the capitalist hegemony for, at least, the past 60 years. It has created more wealth, the most common measure of capitalism's greatness, than any other country.”

Robert Rossney: “Industrialization and development are destroying the environment. Under capitalism, environmental damage is treated as an externality. The rewards of any industrial development are reaped by capital, while the environmental costs are borne by society as a whole. This whole pattern of socializing risk and privatizing reward is found everywhere in capitalism, but it's especially glaring when you look at environmental damage. Of course, non-capitalist systems that industrialize accomplish the same thing in different ways. Under communism, centralized planning set targets for production, but carbon emissions weren't part of the plan. So China is full of badly-polluted industrial zones. Once again, environmental damage is an externality. Both systems are extremely resistant to changing this. Under capitalism, making industries assume the cost of the damage they do to the environment may seem rational, but it can only be accomplished through regulation, and capitalist ideology tells us that regulation is destructive and terrible. The regulations that we write and impose with our government get immediately challenged in court, or the people whose job it is to enforce the regulations get replaced by people from within the regulated industry. Communist systems tend to set their goals without regard to their human cost. (Capitalism sets its goals without regard to the human cost too, mind you.) Remember, for instance, that about half a million Chinese died during the war because the government decided that breaking the dams on the Yellow River would make it harder for the Japanese to defeat it. Their approach to the problem has been making it illegal to talk about or document evidence of environmental damage. This really only worked as long as it was still possible to see through the air in Beijing. Now that it's no longer possible to finesse this, they're now searching to find someone to blame, since the blame cannot fall on the Party.”

About the Cover Artist: Josie Del Castillo

Courtesy of Presa House Gallery

Presa House is proud to announce a solo exhibition of new works by Brownsville-based artist Josie Del Castillo. The opening reception for *Matrescence* will be held on Saturday, February 8, 2025, from 7 to 11 PM, featuring music by DJ Sue Problema. The artist will be in attendance. The exhibition will be on view by appointment through March 15, 2025.

Josie Del Castillo (b. 1992) is a figurative painter born and raised in Brownsville, Texas, where she draws inspiration from her Mexican American heritage and the complexities of life along the border. Del Castillo earned her Master of Fine Arts degree from the University of Texas Rio Grande Valley in 2020. As a first-generation Mexican American, her work explores themes of identity, empowerment, and the complex emotional journey of motherhood. Through vivid self-portraits and vibrant landscapes of the Rio Grande Valley, Del Castillo reflects on her personal experiences, expressing the joys, challenges, and transformative process of becoming a mother.

Matrescence explores the ambivalence of

motherhood—from the overwhelming emotional highs to the psychological struggles that accompany bringing new life into the world. Each piece in the exhibition displays Del Castillo's strength and vulnerability, inviting viewers, particularly new mothers, to engage with the uncomfortable realities and all too often unspoken obstacles of motherhood.

In *Matrescence*, Del Castillo explores themes of self-acceptance, mental health, and cultural and social expectations. The exhibition features all new works, including *Mother's Guilt*, which considers the universal struggles of parenting and the process of embracing imperfection. Other candid works, like *Dolor de Cabeza*, explores Del Castillo's personal battles with postpartum depression, addressing the relentless intrusive thoughts and new excessive concerns of motherhood.

This is Del Castillo's second solo exhibition with Presa House Gallery and her first solo exhibition since the birth of her daughter. She has exhibited extensively throughout the Rio Grande Valley and has participated in group shows regionally, nationally, and internationally, including



exhibitions in Lubbock, Austin, San Diego, Los Angeles, New York, Chicago, and Mexico.

Event Link: <https://presa.house.com/portfolio/february-2025/>
Contact: (210)913-5842 or info@presa.house.com

Matrescence, a term coined by anthropologist Dana Raphael and

revived by Dr. Aurélie Athan, refers to the process of becoming a mother and emphasizes a developmental model that normalizes the psychological transitions women experience during this time.

During *matrescence*, new parents undergo profound changes across

biological, psychological, social, and spiritual dimensions. Mothers face postpartum hormonal shifts while navigating their social identity and relationships, prompting introspection about their values and a sense of belonging.



Had a Major Life Change?

The Special Enrollment Period (SEP) is Available Year Round to Those that Qualify

If you recently got married, moved, gave birth or adopted a baby, or lost your health, CHIP or Medicaid coverage, you may qualify for the special enrollment period.

Schedule an Appointment for Free Assistance Today!

210-977-7997 • EnrollSA.com



Home Loans Happen at Texas Community Bank

If you are buying or refinancing a new home, a second home or a retirement home, Texas Community Bank has a mortgage product for you! We also offer home improvement and home equity loans.

For information regarding our home mortgage products, please contact one of our Mortgage Department representatives at (956) 722-8333 or visit our website at www.tx-communitybank.com to send us an information request.



LAREDO • SAN ANTONIO • SOMERSET • MCALLEN • BROWNSVILLE • DEL RIO • AUSTIN
 WWW.TX-COMMUNITYBANK.COM Member FDIC / Member Vision Bancshares, Inc.

Snowden Living to begin accepting HUD waitlist* applications Dec. 26.

HUD Waitlist* Applications for the for the newly opened Snowden Living (7223 Snowden Rd.) two-bedroom units will be accepted starting Dec. 26. Eligibility screening for applicants selected from the HUD waitlist* will begin next month.

To qualify, applicants and their household members must meet the following criteria:

- All members of the household must be 62 years of age or older
- Meet HUD requirements for citizenship or immigration status
- Meet the applicant selection criteria and complete an application appointment.
- Pass screening for criminal activity and demonstrate acceptable rental history.
- Ensure no household family members are involved in drug-related or criminal activity that poses a threat to the life, health, safety or peaceful enjoyment of the premises by other residents.
- Have an annual income that does not exceed HUD's income limits (no more than 50% of Area Median Income (AMI) based on household size).
- Not owe debts to Opportunity Home or any other federally assisted housing program.

*HUD Waitlist guidelines for 62+ property.



SNOWDEN LIVING



homesa.org/apply

A TODAS LAS PERSONAS Y PARTES INTERESADAS:

Southwest Research Institute, ha solicitado a la Comisión de Calidad Ambiental de Texas (TCEQ, por sus siglas en inglés) lo siguiente: Enmienda del Permiso 43833

Esta solicitud autorizaría modificación del Southwest Research Institute ubicado en 6220 Camino Culebra, San Antonio, Condado de Bexar, Texas 78238. Información adicional sobre esta solicitud se encuentra en la sección de aviso público de este periódico.

MOH PVT. Marcelino Serna, U.S. Army WW I

By CPT. Tony
Mandujano Sr. MA
USA Rt.

LTC Lawrence Romo, LULAC National Veterans V.P. (Former National AGIF Commander, President Barack Obama's director of the U.S. Selective Service Commission,) started the Press Conference by an opening statement, "A Mexican-American soldier named Marcelino Serna was at the rank of a Private but did not receive the Highest Medal in the US Armed Forces, Medal of Honor." " We have brought this matter of attention to the outgoing POTUS Biden while currently calling on Representatives from El Paso, Texas to San Antonio, Texas. We have also communicated this matter to our Fellow Veteran Advocate members, in other states."

Pvt. Marcelino Serna's heroics and lethal effectiveness on the battlefield, where he killed more than two dozen enemy soldiers in a single fight, and brought some to surrender which made him was one of

the most decorated U.S. soldiers in World War I. But he never received the Medal of Honor from the USA while other countries (Italy, France, etc.) did award him their Highest. Though denied the Medal of Honor, Serna did receive a Distinguished Service Cross, the second-highest award for wartime heroism. He also was awarded two Croix de Guerre medals from France, the Croce al Merito di Guerra from Italy and several several honors.

PVT. Serna was shot in both legs by sniper fire on Nov. 7, 1918, and was on convalescent leave in a French hospital while the war ended four days later. He quietly faded into obscurity after returning to El Paso, Texas where he moved on with civilian life. Marcelino Serna then married in 1922 and became an American citizen in 1924. He worked as a city truck driver, a civil service employee at Fort Bliss, Texas and as a plumber at the post hospital, William Beaumont Army Medical Center, before

retiring in 1961. He and his wife, the former Simona Jimenez, had six children, only two of whom lived to adulthood. As a True Patriot for this Country, Serna showed up up to re-enlist when World War II began but was turned away due to his age. Despite his low-profile, however, the World War I Centennial Commission called Serna the most decorated Texan of the Great War, and a U.S. Customs and Border Protection Port of Entry was named for his Heroic actions during war.



CREATIVE designs

DTF Prints

READY TO PRESS! FAST TURNAROUND!



**Small orders ,Big orders
Staff Orders, Team orders
we got you!**

ORDER TODAY!

Follow me on...

Text or Email

210.954.5936

cre8tivedesigns17@gmail.com



Ladies Night

20% off

On any service every Wednesday
Bridal and Quinceanera Special
\$100 Hair & Makeup
\$150 Hair & Makeup & Nails & Toes
BY APPOINTMENT ONLY

Estilo

Hair and Nail Salon
423 W. Mitchell Ste 101 78204
210.233.0990

IF THE SPURS MOVE, WHAT SHOULD WE DO WITH THE FROST BANK CENTER?

Two Townhall Discussions with the Elected Officials Who Represent You

Saturday, January 25, 2025

Saturday, February 1, 2025

10:00 am-1:00 pm

10:00 am-1:00 pm

Joe and Harry Freeman Coliseum Frontier Room
3201 E. Houston

We can't let the Frost Bank Center become an abandoned Astrodome. So let us hear your ideas on what you want to uplift the community. Downtown residents also have needs for safety, infrastructure and more. Let us hear from those downtown and on the Eastside about how new arena projects need to address your neighborhood concerns. Hosted by County Commissioner Tommy Calvert.

RSVP Call: 210-609-9559
TO: Email: jonathon.holler@bexar.org



Hear from These Invited Elected Officials



State Senator
Roland Gutierrez



State Senator
José Mendez



State Representative
Barbara Jarvis-Rawls



County Commissioner
Tommy Calvert



City Council Member
Juan McKee-Rodriguez



Alamo College
District Trustee
Gloria Ray



SAISD School Trustee
Alicia Sebastian



Freeman Coliseum
Executive Director
Derrick Howard

TOMMY CALVERT
COUNTY COMMISSIONER, P.C. 4

Los Spurs Se Solidarizan Con La Comunidad De Los Ángeles

Por Franco

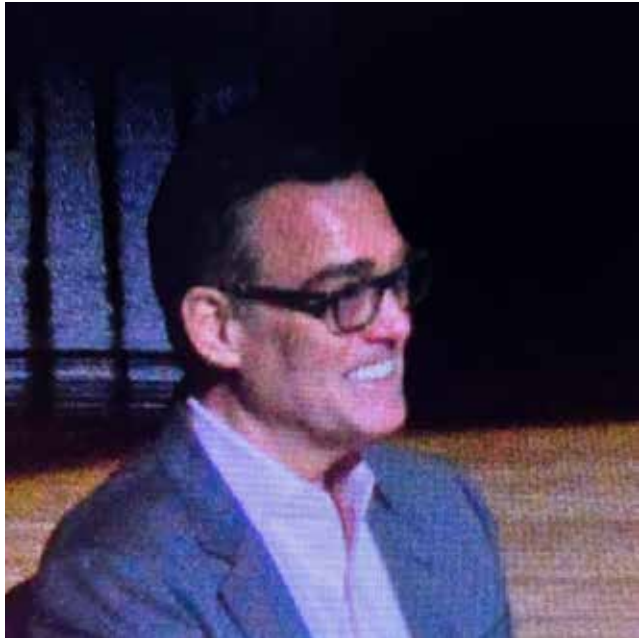
RC Buford, jefe ejecutivo oficial (CEO), Crypto.com Arena. Para así del pentacampeón equipo Los Spurs de San Antonio, en común acuerdo con la NBA y el club Lakers de Los Ángeles, optaron por posponer el partido

del sábado 11 de enero a jugarse en el estadio Crypto.com Arena. Para así respetuosamente honrar a víctimas y quienes perdieron sus casas y propiedades en los sorprendentes incendios forestales en la región angelina.

En boletín oficial informativo el ejecutivo RC Buford, dijo lo siguiente “Completamente apoyamos la decisión de posponer el partido Spurs-Lakers. Es devastador y dolorido de ver cómo como ese siniestro se desparramó volátil causando terrible pérdida entre la comunidad de Los Ángeles. Nuestro sincero pésame para todos los que

sufrieron pérdidas debido a las quemazones. Nos solidarizamos con familias que perdieron todo y a la vez agradecemos la intensiva lucha por contener el fuego por parte de bomberos y voluntarios, quienes sin descanso combatieron las llamas en el frente”. Por otro lado se supo que el entrenador en jefe de Lakers JJ Redick, perdió su casa

durante los incendios. Lakers en su segundo partido programado contra Spurs (lunes 13 de enero), llevó a efecto campaña de recolección de donativos a beneficio de la comunidad angelina. Lo cual seguirá realizando en próximos partidos locales. Foto de RC Buford es de Franco, fotos de incendios de cortesía.





Tu mejor resolución: Vacunarte.

Si eres un adulto mayor, empieza el año protegido contra la gripe, el COVID-19 y el VRS. Los doctores recomiendan las 3 vacunas como tu mejor defensa contra enfermarte gravemente.

La temporada pasada de virus respiratorios, los adultos de 65 años o más tuvieron 10 veces más probabilidades de ser hospitalizados por estos 3 virus que los adultos menores de 50 años.

Comienza el año con el pie derecho. Vacúnate hoy.

Empieza en [vacunas.gov](https://www.vacunas.gov)

**ARRIESGA MENOS.
HAZ MÁS.**
Ponte las vacunas de la temporada



Pagado por el
Departamento de
Salud y Servicios
Humanos de EE. UU.

San Antonio for Growth on the Eastside, Inc. (SAGE) Recibe una Subvención de Planificación de \$2,000,000 del Departamento de Transporte de EE. UU. (USDOT) Para Catalizar el Desarrollo de Eastside

Cortesía de James A. Nortey, II Esq.

San Antonio for Growth on the Eastside, Inc. (SAGE) se complace en anunciar el recibo de \$2,000,000 para desarrollar e implementar un estudio de planificación y visión informado por la comunidad. Para explorar el posible enterramiento, cobertura y unión de cuatro áreas a lo largo de tres carreteras principales (IH 10, IH 35 e IH 37) en el lado este de San Antonio (el "Proyecto"). El Proyecto tiene como objetivo deshacer las barreras de larga data al desarrollo económico, mejorar la conectividad y restaurar la cohesión entre vecindarios históricamente divididos. Al involucrar a residentes, partes interesadas y planificadores urbanos, el estudio desarrollará una visión para modernizar las carreteras interestatales como espacios verdes donde las personas puedan obtener un mayor acceso a la vivienda, el trabajo y el juego, mientras se mueven con libertad y seguridad por el lado este.

Durante los próximos meses, SAGE identificará e involucrará a socios clave, incluidos líderes comunitarios, funcionarios de gobiernos locales, planificadores urbanos, agencias de transporte y organizaciones ambientales para identificar roles que ayuden en el proceso de visión más amplio. SAGE también emitirá una Solicitud de Propuestas a empresas de servicios profesionales calificadas para tener conceptos preliminares disponibles para la discusión de la comunidad.

El director ejecutivo de SAGE, James Nortey, comentó: "Esta subvención representa una enorme inversión en el lado este de San Antonio que se necesitaba desde hace mucho tiempo para una comunidad que ha enfrentado desafíos económicos persistentes durante demasiado tiempo. El lado este ha esperado décadas para encontrar soluciones significativas a las barreras sistémicas. Estamos agradecidos de recibir esta financiación para promover el crecimiento económico a largo plazo, la salud pública y mejoras en la movilidad".

El proyecto está situado en el lado este de San Antonio, donde se unen las autopistas IH-10, IH-35 e IH-37.

"Esta es una gran noticia para la gente de San Antonio", dijo el congresista Greg Casar (demócrata por Texas). "Colocar las carreteras y crear nuevos espacios verdes beneficiaría a las familias de toda la ciudad. Estoy emocionado de ver qué se le ocurre a

SAGE y la comunidad".

El congresista Joaquín Castro (demócrata por Texas) añadió: "El lado este de San Antonio es un vecindario vibrante de gente trabajadora. Me enorgulleció trabajar con el Representante Casar para obtener esta subvención de \$2 millones del Departamento de Transporte e iniciar el proceso de planificación para transformar varios espacios a lo largo de las interestatales del área en espacios verdes que fomentarán la comunidad y la conexión. San Antonio for Growth on the Eastside (SAGE) se ha comprometido desde hace mucho tiempo a derribar las barreras económicas en el Eastside y me complace seguir apoyando su misión con este proyecto informado por la comunidad".

Como se ilustra arriba, estas carreteras forman divisiones físicas entre el lado este y otras partes de la ciudad, incluido el centro de San Antonio.

- IH-10 corre de este a oeste, formando una barrera a lo largo de la parte sur del Eastside;
- IH-35 es una carretera de norte a sur, pero corre de oeste a este cerca del centro de San Antonio, dividiendo el lado este y aislando aún más los vecindarios del centro y otras áreas de actividad económica; y
- IH-37 conecta el centro con las partes del sur de la ciudad y contribuye a la fragmentación de la comunidad a medida que corre hacia el sur desde el núcleo central.

Estas carreteras crean divisiones difíciles de transitar, restringiendo el movimiento de los peatones y limitando el acceso a espacios públicos, negocios y servicios en toda la ciudad.

Actividades clave del proyecto

La adjudicación del Programa Piloto de Reconexión de Comunidades (RCP) del USDOT facilitará varias actividades esenciales, que incluyen:

- Construyendo una coalición comunitaria: Involucrar a las partes interesadas locales y a los miembros de la comunidad para construir una sólida red de apoyo para el proyecto.
- Asegurar fuentes de financiamiento adicionales: Buscar diversas oportunidades de financiamiento: el costo total del proyecto se estima en \$2,500,000, y SAGE identificó \$500,000 adicionales al 20% de contrapartida no federal requerido a través de una combinación de contribuciones públicas y privadas.
- Realización de análisis

medioambientales y de ingeniería: Contratar a expertos para realizar análisis de diseño/planificación urbana, transporte, medio ambiente y preservación histórica.

Los fondos respaldarán los salarios del personal y los servicios contratados para completar actividades de planificación especializadas, incluida la participación pública, representaciones arquitectónicas/de ingeniería, estudios de transporte, análisis de preservación histórica y evaluación de programas. La planificación detallada y el aporte de la comunidad son cruciales para garantizar que el proyecto final satisfaga las necesidades únicas de la comunidad de Eastside y fortalezca su economía local.

El Proyecto propone estudiar la viabilidad de tapar partes de estas carreteras, transformándolas en espacios verdes y áreas amigables para los peatones. Con ello pretende:

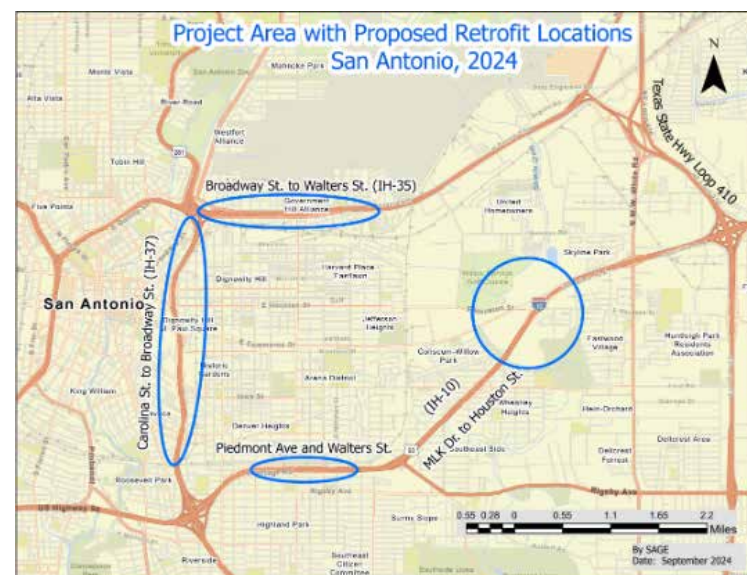
- reconectar comunidades: unir vecindarios históricamente divididos por infraestructura vial;
- mejorar las opciones de movilidad, fomentando el uso de caminar, andar en bicicleta y el transporte público, reduciendo así la dependencia de los automóviles;
- mejorar el desarrollo económico: revitalizar las áreas circundantes fomentando la transitabilidad peatonal, aumentando el tráfico peatonal y embelleciendo el área para hacerla más atractiva para pequeñas empresas, viviendas e inversiones comerciales;
- recuperar espacios comunitarios: reemplazar secciones de la carretera con espacios que fomenten la interacción comunitaria y el desarrollo empresarial local, promoviendo opciones de movilidad más inclusivas y accesibles que se adapten al contexto local; y
- Reducir la velocidad y mejorar la seguridad: al limitar secciones de carreteras de alta velocidad, el Proyecto ralentizará el tráfico de automóviles en áreas clave y creará espacios más seguros y acogedores para los usuarios que no utilizan automóviles.

Una historia de desplazamiento y desinversión

A principios del siglo XX, el Eastside era conocido por su diversidad cultural, compuesta principalmente por comunidades negras, mexicoamericanas e inmigrantes. Era económicamente autosuficiente.

suficiente con una sólida red de empresas locales, escuelas, iglesias y clubes sociales que fomentaran una comunidad muy unida.

La construcción de la IH-10, la IH-



35 y la IH-37 a mediados del siglo XX tuvo un efecto devastador en el lado este. Estas carreteras se construyeron durante un periodo de renovación urbana a nivel nacional, que se centró desproporcionadamente en los barrios minoritarios. La construcción de estas carreteras dividió literalmente el lado este del centro de San Antonio y el resto de la ciudad, cortando corredores comerciales críticos y desplazando a miles de residentes y empresas. A medida que las carreteras fomentaron la suburbanización, los residentes y empresas más adineradas abandonaron el Eastside. Esta huida urbana, combinada con la desinversión de la ciudad, provocó una disminución del valor de las propiedades, un aumento de los terrenos baldíos y una concentración de la pobreza en la zona.

Un punto de inflexión para el lado este de San Antonio

Esta subvención, junto con la reciente subvención de Planificación de Desarrollo Económico Comunitario (CED) de \$150,000 del Departamento de Salud y Servicios Humanos para desarrollar un plan de negocios integral e informado por la comunidad para establecer un complejo de mercado público, significa un nuevo capítulo para SAGE como receptor. de financiación federal después de una pausa de una década. En conjunto, estos premios reflejan un compromiso federal renovado para apoyar la misión de SAGE de fomentar el crecimiento inclusivo y abordar los desafíos sistémicos en el lado este de San Antonio.

Como señaló el Dr. Tomeka C. Wilson de St. Philip's College, presidente de la junta directiva de SAGE: "¡SAGE

está en racha! El impulso que estamos generando con estas dos subvenciones federales no tiene precedentes. Este premio de \$2 millones no solo es la mayor contribución que SAGE ha recibido en nuestros 27 años de historia, sino que también subraya el creciente reconocimiento del potencial del Eastside y la importancia de invertir en su futuro".

Acerca de SAGE

San Antonio for Growth on the Eastside, Inc. (SAGE) es una organización de desarrollo económico 501(c)(3) enfocada en promover el desarrollo económico y la vitalidad cultural del Eastside de San Antonio mediante el apoyo a las pequeñas empresas, la preservación de la cultura y el patrimonio del Eastside, y guiar el crecimiento para un desarrollo sin desplazamientos.

Para obtener más información, póngase en contacto con:

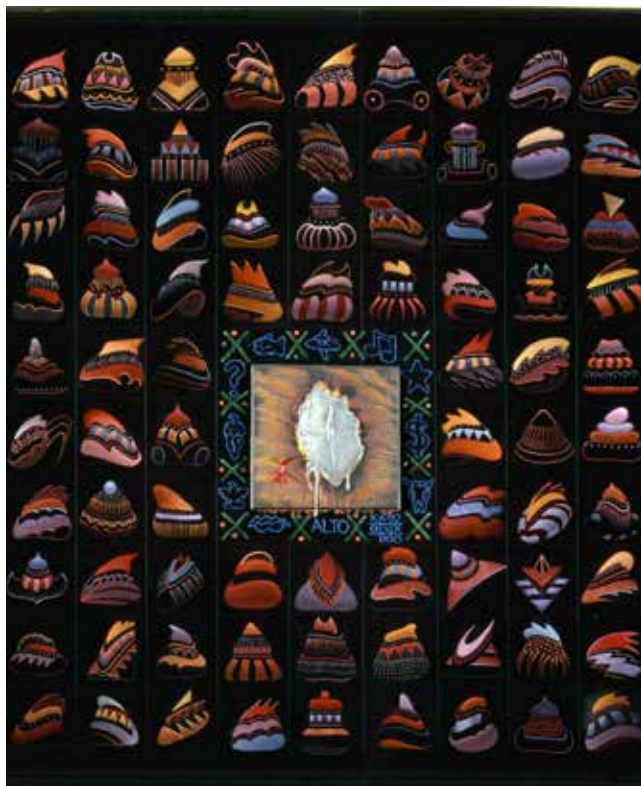
Shamari Leung
Especialista en Medios Digitales
San Antonio para el crecimiento en el lado este (SAGE)
comunicaciones@sagesa.org | (210) 248-9178

Geneva Fuentes
Asesor Senior y Director de Comunicaciones
Congresista Joaquín Castro (TX-20)
Ginebra@mail.house.gov | 202-760-0802

Jacob Lucas
Gerente Digital
jakob.lucas@mail.house.gov | (281) 627-7133

Puede encontrar más información en el sitio web de premios del año fiscal 24 del programa piloto de reconexión de comunidades (RCP) del USDOT. aquí.

Benito Huerta: A Latino Art Trailblazer, Curator, and Educator



Benito Huerta, "The Hive." Courtesy of the artist.

Ricardo Romo

A long anticipated art show featuring the work of the multitalented North Texas Latino artist, Benito Huerta, opened recently at the Kirk Hopper Fine Art gallery in Dallas. Huerta is part of a two-person exhibition with his wife Janet Chaffee. He told Texas art magazine Glasstire that the exhibit includes a sampling of his sculpture, painting, drawing, and print work. He described the subject matter as "an amalgamation of political, economic, and social commentary along with personal identity and pop culture references."

Huerta is an important and well-known figure in Texas art circles. His career embodies nearly fifty years of involvement as an artist, curator, educator and champion

of diverse creative voices. Although I was unable to attend the show's opening because of an ice storm, I am familiar with Huerta's commissioned public art works at Terminal D of the Dallas/Fort Worth International Airport, the Henry B.

Gonzalez Convention Center in San Antonio, and the Mexican American Cultural Center in Austin, Texas. These large art works have given Huerta great visibility over the last two decades.

Huerta was born in Corpus Christi, Texas but grew up in Houston after his family moved there when he was in middle school. His new community, Bellaire, was largely Anglo, and Huerta experienced his first encounters with prejudice and racism. His interest in art evolved slowly. It was not until his senior year at the University of Houston [UH] that he found his artistic voice. He told Cary Cordova of the Smithsonian that he started painting in his last year at UH when he realized that he had a significant number of electives to take to graduate. As a consequence, he "started taking painting, advanced drawing, lithography, watercolor, and short story writing, and I excelled in all those classes and really, for the first time, I started enjoying myself in

school."

After completing studies at the University of Houston, Huerta took the advice of one of his art professors who encouraged him to apply to graduate school. When New Mexico State in Las Cruces offered Huerta a scholarship, he jumped at the opportunity. A highlight of his experience

at New Mexico State occurred when one of his instructors bought one of his paintings. Huerta told the Smithsonian: "So, nobody ever really bought a painting of mine, and now here a faculty person was buying one. I felt really good."

Huerta co-founded the Texas art journal *Art Lies* in the mid-1990s and curated several groundbreaking art shows. He organized the first traveling retrospective of Latino artist Luis Jimenez. University of Arizona professor Gary Keller followed Huerta's work over many years and wrote that the artist had a fascination with the power of images. Keller explained, "His oeuvre is replete with works that utilize, exploit, and expound upon the multiplicity and power of symbols, the results being objects that elicit contemplation, investigation, and reverence."

Huerta moved to San Francisco and then New York after graduating from New Mexico State and began painting in earnest. His painting for his first show in 1976 portrayed a deceased young Black boy with a police chalk outline on the sidewalk of where the body once laid. Early in his career Huerta used his art to call attention to

violence and political action. In his artist's statement he commented: "Issues of race, fear and violence are current topics in my work as a reaction to the



Benito Huerta, "Corazon Sagrado." Courtesy of the artist.



A two-person exhibition with Benito Huerta and Janet Chaffee December-January, 2024-2025, at Kirk Hopper Fine Art, Dallas.

Photo courtesy of Benito Huerta.

current political climate which has become racially divisive, economically polarizing, politically nationalistic and physically violent at times."

After the 1980s Huerta's work was in high demand. In his first two decades as an artist he participated in 137 group

exhibitions and 22 solo shows. Over his twenty-five years at UT Arlington [1997-2022], Huerta's art was featured in 41 solo shows and in 188 group exhibitions. Huerta expanded on his artistic philosophy to Glasstire when he commented: "I like that aspect of art making



Benito Huerta, "Untitled." Courtesy of the Artist.

because we're problem solvers. We create our problems and then try to make those problems or issues or concepts work. It's almost like the work takes a life of its own and dictates or leads you to go in a direction you never even thought of."

The Mira! Canadian Club Hispanic Art Tour in the mid and late 1980s was a major artistic breakthrough for Benito Huerta. Mira! became the first major Latino traveling exhibit, and participant selection was highly competitive. Joining Huerta in the exhibit were several notable Latino Tejanos including Nivia Gonzales, Cesar Martinez, Jesse Trevino, and Alberto Mijangos. Cesar Martinez's well-known piece, *Pantalon Rojo*, won first prize in round one of the Mira! exhibit and Huerta's *Tres Equis* won first prize in the second round of Mira! when it opened

at the Museo Del Barrio in New York City in 1985.

Huerta gained significant national presence with his Mira! \$5,000 first prize award for the "Tres Equis" painting shown at the Museo del Barrio in New York City. However, the timing for this award conflicted with another important show, the Hispanic Art in the United States exhibit, that had selected two of his works, *Tres Equis* and *Schizophrenia*. When the Hispanic Art curators requested the same art pieces for their show, the

sponsors, Canadian Club, were unwilling to remove the piece from the Mira! exhibit. Although he was disappointed at not being included in Hispanic Art, Huerta went on to other important shows over the next two years in Florida, Texas, Kansas, Arizona, Colorado and California— in the years

immediately following Mira! [1988-1990].

Benito Huerta was also one of the artists chosen by the McNay Art Museum for the *Estampas de la Raza: The Romo Collection* show in 2013. That exhibit traveled to Albuquerque, Los Angeles, Raleigh, Sacramento, Chicago, Delaware, Atlanta, and Jersey City. His superb art piece in the *Estampas* show, "Cast of Characters," was printed by Sam Coronado in Austin. Coronado also had several of his works in the *Estampas* collection. Over a ten year period Harriett and I purchased three large portfolios from Coronado, a total of 750 serigraph prints. We donated the Coronado portfolios to UT Austin's Latin American Collection, the McNay, and the San Antonio Museum of Art. Huerta's prints are in major Texas museums and the University of Texas collection in Austin.

When Huerta joined the Art Department of the University of Texas at Arlington in 1997, he assumed the Director/Curator position at The Gallery of UTA. Over the

next 25 years Huerta brought major Texas artists to the UTA campus and gave Latino artists a presence in the Dallas-Fort Worth-Arlington complex. A UTA newsletter

noted that during his tenure Professor Huerta "developed a guiding philosophy of showcasing contemporary work by exemplary artists who reflected the world in all of its diversity." His colleagues in the art department praised his "incredible gift for curation, tireless and proactive relationship-building and mentoring, seemingly endless energy, and modeling excellence as an accomplished artist himself."

Huerta's participation in exhibitions is impressive given that he taught full-time as an art professor and devoted hours to being the director/curator of The Gallery at UT Arlington.



Benito Huerta, In a two-person exhibition with Benito Huerta [Signal de Vida] and Janet Chaffee, framed ["Involute in Charcoal"]. December-January, 2024-2025, at Kirk Hopper Fine Art, Dallas.

Photo courtesy of Benito Huerta.



Benito Huerta, "Portrait of my Father." Courtesy of the artist.

Huerta's accomplishments in hosting exhibitions at The Gallery at UTA are impressive. Art historian Heather Sealy Lineberry's commentary on Huerta's work merits repeating. She wrote, "Huerta has focused upon work that is anchored to content—whether covert, overt,

or ambiguous—a tendency that many Latino artists share." She added, "Huerta adamantly refused to accept limitations and prejudice inherent in the designation 'Chicano artist' for his concerns range far beyond his cultural heritage."



PRESENTED BY



303 E GRAYSON ST

British Metal



PAYING TRIBUTE TO 80'S BRITISH ROCK

SATURDAY FEBRUARY 1, 2025

FOREVERMORE
the Whitesnake experience



18+ & UP SHOW!

DOORS OPEN @ 7:30

MUSIC STARTS @ 8:30PM

TICKET LINK WWW.SAMBURGERJOINT.COM

COMISIÓN DE CALIDAD AMBIENTAL DE TEXAS



AVISO DE RECIBIMIENTO DE LA SOLICITUD E INTENCIÓN DE OBTENER UN PERMISO DE AIRE (NORI)

NÚMERO DE PERMISO DE CALIDAD DEL AIRE 43833

SOLICITUD SOUTHWEST RESEARCH INSTITUTE, ha solicitado a la Comisión de Calidad Ambiental de Texas (TCEQ, por sus siglas en inglés) para: Enmienda del Permiso 43833. Esta solicitud autorizaría la modificación del Southwest Research Institute ubicado en 6220 Camino Culebra, San Antonio, Condado de Bexar, Texas 78238. Este enlace a un mapa electrónico de la ubicación general del sitio o instalación se proporciona como cortesía pública y no como parte de la solicitud o aviso. Para conocer la ubicación exacta, consulte la aplicación. <https://gisweb.tceq.texas.gov/LocationMapper/?marker=-98.61,29.452222&level=13>. La instalación emitirá los siguientes contaminantes: plomo, *contaminantes peligrosos del aire*, monóxido de carbono, óxidos de nitrógeno, compuestos orgánicos, material particulado, incluido material particulado con diámetros de 10 micrones o menos y 2.5 micrones o menos y dióxido de azufre.

Esta solicitud se presentó a la TCEQ el 20 de noviembre de 2024. La solicitud estará disponible para su visualización y copia en la oficina central de la TCEQ, la oficina regional de la TCEQ San Antonio y la *Biblioteca Bazan, 2200 West Commerce Street, San Antonio*, Condado de Bexar, Texas a partir del primer día de publicación de este aviso. El archivo de cumplimiento de la instalación, si existe alguno, está disponible para su revisión pública en la oficina regional San Antonio de la TCEQ.

El director ejecutivo ha determinado que la solicitud está administrativamente completa y llevará a cabo una revisión técnica de la solicitud.

COMENTARIO PÚBLICO. Usted puede enviar comentarios públicos a la Oficina del Secretario Oficial en la dirección a continuación. La TCEQ considerará todos los comentarios públicos al desarrollar una decisión final sobre la solicitud y el director ejecutivo preparará una respuesta a esos comentarios.

REUNIÓN PÚBLICA. Puede solicitar una reunión pública a la Oficina del Secretario Oficial en la dirección a continuación. El propósito de una reunión pública es para brindar la oportunidad de enviar comentarios o hacer preguntas sobre la solicitud. Se llevará a cabo una reunión pública sobre la solicitud si lo solicita una persona interesada y el director ejecutivo determina que existe un grado significativo de interés público en la solicitud o si lo solicita un legislador local. Una reunión pública no es una audiencia de caso impugnado.

ANUNCIO DE SOLICITUD Y DECISIÓN PRELIMINAR. Además de este NORI, 30 Texas Admin. Cod. (TAC) § 39.419 requiere que esta solicitud también tenga un Aviso de Solicitud y Decisión Preliminar (NAPD, por sus siglas en inglés) después de que se determine que la solicitud está técnicamente completa y se prepare un bosquejo de permiso. **Tenga en cuenta que: La TCEQ puede actuar sobre esta solicitud sin emitir un NAPD y sin buscar más comentarios públicos o proporcionar más oportunidades para una audiencia de caso impugnado si los cambios en las representaciones en la solicitud hacen que la solicitud ya no esté sujeta a los requisitos de aplicabilidad de 30 TAC § 39.402. En tales casos, este NORI será su aviso final de esta solicitud y no tendrá oportunidades adicionales para hacer comentarios o solicitar una audiencia de caso impugnado.** Si se requiere un NAPD, se publicará y enviará por correo a aquellos que hicieron comentarios, enviaron solicitudes de audien-

cia o están en la lista de correo para esta solicitud, y contendrá la fecha límite final para enviar comentarios públicos.

OPORTUNIDAD PARA UNA AUDIENCIA DE CASO IMPUGNADO. Puede solicitar una audiencia de caso impugnado si usted es una persona que puede verse afectada por las emisiones de contaminantes del aire de la instalación. Si solicita una audiencia de caso impugnado, debe presentar lo siguiente: (1) su nombre (o para un grupo o asociación, un representante oficial), dirección postal y número de teléfono diurno; (2) nombre y número de permiso del solicitante; (3) la declaración "[Yo/nosotros] solicitamos una audiencia de caso impugnado"; (4) una descripción específica de cómo se vería afectado negativamente por la aplicación y las emisiones atmosféricas de la instalación de una manera no común para el público en general; (5) la ubicación y distancia de su propiedad en relación con la instalación; (6) una descripción de cómo utiliza la propiedad que puede verse afectada por la instalación; y (7) una lista de todas las cuestiones de hecho en disputa que envíe durante el período de comentarios. Si la solicitud es hecha por un grupo o una asociación, uno o más miembros que tienen capacidad para solicitar una audiencia deben ser identificados por su nombre y dirección física. También deben identificarse los intereses que el grupo o asociación busca proteger. También puede presentar los ajustes propuestos a la solicitud / permiso que satisfagan sus inquietudes.

La fecha límite para presentar una solicitud para una audiencia de caso impugnado es de 30 días después de que se publique el aviso del periódico. Si una solicitud se presenta oportunamente, la fecha límite para solicitar una audiencia de caso impugnado se extenderá a 30 días después del envío de la respuesta a los comentarios.

Si una solicitud de audiencia se presenta oportunamente, después del cierre de todos los períodos de comentarios y solicitudes aplicables, el Director Ejecutivo enviará la solicitud y cualquier solicitud de audiencia de caso impugnado a los Comisionados para su consideración en una reunión programada de la Comisión. La Comisión sólo podrá conceder una solicitud de audiencia de un asunto impugnado sobre cuestiones que el solicitante haya presentado en sus observaciones oportunas que no hayan sido retiradas posteriormente. **Si se concede una audiencia, el tema de una audiencia se limitará a cuestiones de hecho en disputa o cuestiones mixtas de hecho y de derecho relacionadas con preocupaciones relevantes y materiales sobre la calidad del aire presentadas durante el período de comentarios.** Cuestiones como los valores de las propiedades, el ruido, la seguridad del tráfico, y la zonificación están fuera de la jurisdicción de la Comisión para abordar en este procedimiento.

LISTA DE CORREO. Además de enviar comentarios públicos, puede solicitar ser colocado en una lista de correo para recibir futuros avisos públicos para esta solicitud específica enviando una solicitud por escrito a la Oficina del Secretario Oficial a la dirección a continuación.

CONTACTOS E INFORMACIÓN DE LA AGENCIA. Los comentarios y solicitudes del público deben enviarse electrónicamente a www14.tceq.texas.gov/epic/eComment/, o por escrito a Texas Commission on Environmental Quality, Office of Chief Clerk, MC-105, P.O. Box 13087, Austin, Texas 78711-3087. Tenga en cuenta que cualquier información de contacto que proporcione, incluido su nombre, número de teléfono, dirección de correo electrónico y dirección física, se convertirá en parte del registro público de la agencia. Para obtener más información sobre esta solicitud de permiso o el proceso de permisos, llame al Programa de Educación Pública al número gratuito 1-800-687-4040. Si desea información en español, puede llamar al 1-800-687-4040.

También se puede obtener más información de SOUTHWEST RESEARCH INSTITUTE 6220 Camino Culebra, San Antonio, Texas 78238. o llamando a Sra. Amber Chapman, Científica ambiental líder at (210) 522-3271.

Fecha de emisión del aviso: 9 de enero de 2025

GARDEN OF REMEMBRANCE

\$2,695.00
per niche



Financing Available
Schedule Your Park
Tour Today
210.599.2035

CONTACT DETAILS:

📞 210.599.2035
✉ rtaylor@chapelhillsa.com
📍 7735 Gibbs Sprawl Rd
San Antonio, TX 78239

Listing ID: 1787645

8655 Datapoint Dr 212
San Antonio
Offered at \$125,000

- 1 Bedrooms
- 1/0 Bathrooms
- 544 Sq Ft (approx)
- Lot Size:



Second floor one bedroom condo located in the Medical Center. Living room and master bedroom features high ceilings and large walk-in closet. Private covered patio with extra storage. The condo community includes a clubhouse, pool, spa, gazebo and one covered assigned parking space.



Sylvia A Sierra
Realtor® / Agent
Vortex Realty
2241 N.W. Military Hwy Ste 302
San Antonio, TX 78213
Cell: (210) 445-3603 | Fax: (210) 647-6935
luxurypropertiesbysylvia@gmail.com
Languages Spoken: Spanish
Broker ID: 510436



List office: Vortex Realty (210) 647-6557

All measurements and figures are approximate. Source of information is deemed reliable, but not verified.

All measurements, taxes, age, financial & school data are approximate and provided by other sources. Buyer should independently verify same before relying thereon.
Copyright 2024 by SAN ANTONIO BOARD OF REALTORS



The Federal Fair Housing refers to Title VIII of the Civil Rights Act of 1968. This Act, in addition to the Texas Fair Housing Act, protects your right to rent an apartment, buy a home, obtain a mortgage, or purchase homeowners insurance free from discrimination based on Race, Color, National Origin, Religion, Sex, Familial Status or Disability.



DENTAL HYGIENE

A Partnership with the Community

Want to be a patient?



Call: 210-486-3327

Questions email to: pac-dhpatinfo@alamo.edu

Dental Hygiene Services, that are provided, are listed below, if needed:

<ul style="list-style-type: none"> ❖ Comprehensive dental exam assessment by student and licensed faculty supervised by a Licensed DDS ❖ Fully Digital Radiographic Examinations ❖ Intraoral and Extraoral Head and Neck Cancer Examinations ❖ Complete Dental Charting Evaluation with necessary referrals ❖ Full Periodontal Evaluation by students and faculty ❖ Evaluation of Nutritional Counseling if Risk Assessment determines need. 	<ul style="list-style-type: none"> ❖ Evaluation of a Smoking Cessation program. ❖ Risk Analysis completed for all patients to determine their level of risk for Oral Cancer, Periodontal Disease, Dental Caries. ❖ Routine dental prophylaxis determined by patient need. ❖ Deep Scaling Procedures determined by patient need. ❖ Sealant placement determined by patient need. ❖ Patient education in all aspects of oral healthcare and overall wellness.
--	---

Age Group Title	Age Range	Number of Appointments	Cost
Seniors	60+ years	The patient should expect to attend 2 to 7 appointments for our appointments.	Free
Adults	20 - 59 years		\$30.00
Adolescents	12 - 19 years		\$20.00
Children	5 - 11 years		\$10.00

Additional Items



Sealants For any age as diagnosed	First 4 sealants are: Each Additional sealant is:	Total \$20.00 \$1.00 per tooth
--------------------------------------	--	-----------------------------------

Active Military and First Responders will incur NO cost for services.

Palo Alto College Offering No-Cost English Second Language (ESL) Classes to Local Community

Courtesy of Adriana Ballast

Palo Alto College is excited to announce the return of its free 8-week English as a Second Language (ESL) classes for the local community. In Spring 2025, the college will again offer this valuable opportunity to support personal and professional growth for individuals seeking to improve their English language skills. The registration period begins January 27, 2025, and closes February 13, 2025, with classes running from March 24, 2025, through May 15, 2025.

Palo Alto College serves a predominantly Latino and underserved population, and this ESL program is designed to meet the needs of individuals who want to build confidence and proficiency in English.

The classes are available to learners of all levels, from beginner to advanced. Each student will be assessed upon entry to determine their current language proficiency level and placed into one of four levels: basic (level 1), level 2, level 3, or level 4.

The ESL program includes instruction in four key areas of language acquisition: listening, speaking, reading, and writing. In addition to these foundational skills, the curriculum integrates grammar and vocabulary lessons, providing students with a holistic approach to mastering English. Designed with a standards-based framework, the program ensures that each level builds on prior knowledge, allowing learners to progress in a structured way. Activities, self-assessments, and tests

are incorporated to help students evaluate their progress and reinforce the material being taught.

“Teaching ESL to adults is not just about learning a new language; it's about transforming lives. It's about giving someone the tools to connect with their community, to navigate opportunities, and to express their dreams. Each student brings their unique story, and watching their progress—whether it's confidently greeting someone, writing their first paragraph, or sharing their thoughts in class—is a privilege that reminds us of the power of education,” shares instructor Stephanie Rodriguez. “ESL is more than language; it's growth, empowerment, and proof that no matter the challenge, progress is always possible.”

This free ESL program

aims to provide crucial language skills to enhance career opportunities, community involvement, and overall quality of life. By offering the program at no cost, the college is removing financial barriers for local residents and making language acquisition accessible to those who need it most.

For registration information, visit Palo Alto College's Community Programs website, alamo.edu/pac/esl, or contact the department at pac-commprog@alamo.edu.

Registration Details

Registration Period: January 27, 2025 – February 13, 2025

Spring Session Dates: March 24, 2025 – May 15, 2025

Program Format: 8-week, skills-focused ESL classes (free of charge)

About Palo Alto College

Palo Alto College, part of the Alamo Colleges District, is accredited by the Southern Association of Colleges and Schools Commission on Colleges and a recipient of the 2015 Texas Award for Performance Excellence, a finalist for the 2016 Malcolm Baldrige National Quality Award, and a Rising Star winner of the 2019 Aspen Prize for Community College Excellence. With over 12,000 students, Palo Alto College is accredited to offer associate degrees and short-term certificates.

The college is located on the Southside of San Antonio at 1400 W. Villaret Blvd. at I-410 and Texas Hwy 16 and online at alamo.edu/pac.

DOBLE ESTRENO

A OTRO NIVEL

LUNES - VIERNES



LOS 50



7PM/6C

Sed de VENGANZA



9PM/8C

THE LITTLE RUNNER



DESARROLLADO POR



Viajar por el centro ahora es más fácil.

Un nuevo e innovador servicio de transporte basado en su horario a precios de VIA.

Descarga la aplicación para **VIAJAR GRATIS** usando el código **5ZONES** en VIAinfo.net/Link



Se vence 12/31/2024

4 Free Rides

Just use promo code **5ZONES** when you book and ride in any zone before December 31, 2024.



Download the **VIA Link** app to book your ride today.

El Caminante Campeón De Bateó Con Promedio De .500

Sendero Deportivo

El beisbolista internacional Víctor Antonio Mercedes [El Caminante], del equipo Potros resultó campeón en el departamento de bateó con promedio de .500, en la temporada 2024 dedicada a Pachin Martínez y Rudy Barrientez en el circuito dominical Abierta Liga Potranco con sede en el estadio Potranco Baseball Field propiedad del artista Eloy Rocha y

bajo la coordinación del presidente Simón Sánchez. El Caminante ahora con el apoyo de Rocha, dueño del club Potros, en ausencia del triunfador manager Luis Cerros, tras eliminar a Cachorros 8-1, será el manager y jugador en la serie del playoff final contra el equipo que resulte ganador entre Acereros y Pericos que se encuentra empatada tras victoria de Pericos. Matt Harrell ganó

por los Potros con derrota para Manuel González, Resultados del playoff patrocinado por Potranco Ballroom: Pericos del magnate Memo Frausto, con pitcheo de Jheyson Manzueta, emparejó la serie 1-1 con pizarra de 4-3 carreras ante Acereros de Memo de la Cerda y Luis Mendoza "El Tronco". Diego Dugarte perdió con relevo de Víctor Mateo. El tercer partido se jugará este domingo en el horario de las 12pm campo 1 estadio Potranco.

Acereros con hit de Ricky Estrada en la novena entrada anotaron tres carreras.

De acuerdo a Cristian Arzola vocero y jugador de Pericos, felicitó a los lanzadores Manzueta y Dugarte quien ponchó a once Pericos dirigidos por el manager Francisco Navarro y el coach Mario Cárdenas. Por Pericos destacaron con el bate Marco Cabrera con doblete productor de la primera anotación, seguido por Kevin Vela con sencillo productor de dos carreras. El presidente Sánchez, pidió minuto de silencio en memoria del gran beisbolista y amigo Saúl Navejar (QEPD).

Lo mismo seguido realizó en la categoría Masters 50+ donde antes de comenzar el primer partido de la octava fecha entre Rangers y Broncos,

la señora Linda Garza presidenta de Broncos y José Sánchez, narrador y compilador pidieron un minuto de silencio en memoria de Navejar, quien fue cofundador del club Broncos de Reynosa junto con el magnate Jesús Garza y Goyito Prado. Resultados temporada Macario Rosas Masters 50+ Campo Potranco 2. Rangers de Benito Martínez (El Venado) con pitero del coach Ruperto Ortega y relevo de Hugo Méndez derrotó 9-8 a Broncos y su lanzador

estelar Humberto García (El Flaco), quien tuvo relevo del pitcher campeón Ubaldo Montelongo. Yankees se impuso ante Astros. Rol de juegos: 10am Yankees vs Reds. 1pm Rangers vs Astros. Broncos descansan. En las fotos aparecen El Caminante, Chris Rivera de Cachorros y Andrew Pérez receptor de Potros. Saúl Navejar vistiendo la camiseta de Cardenales de Nacho García. Descanse en paz nuestro buen amigo Saúl Navejar (Fotos de Franco).



FIGHT THE FLU

Don't Let It Stop You!

Everyone 6 months and older should get a flu vaccine every season. The flu vaccine can reduce flu illnesses, hospitalizations and has been shown to be life-saving. Don't let the flu stop you, get vaccinated today! Talk to your health provider or visit your local pharmacy.



To schedule an appointment with Metro Health, call 210-207-8790.



Scan the QR code



Are you at risk?

Get Screened for Risks of Stroke and Cardiovascular Disease

Special Screening Package for \$149



Call 855-812-7001



Why you need dental insurance in retirement.

Medicare doesn't pay for dental care.!

As good as Medicare is, it was never meant to cover everything. If you want protection, you need to purchase individual insurance.

Early detection can prevent small problems from becoming expensive ones.

The best way to avoid large dental bills is preventive care. Experts recommend checkups twice a year.

Previous dental work can wear out.

Your odds of having a dental problem only go up as you age.²

Treatment is expensive — especially the services people over 50 often need.

Unexpected bills, like \$190 for a filling, or \$1,213 for a crown³ can be a real burden, especially if you're on a fixed income.

When you're comparing plans ...

- ▶ Look for coverage that helps pay for major services.
- ▶ Look for coverage with no deductibles.
- ▶ Shop for coverage with no annual maximum on cash benefits.

Simply put – without dental insurance, there may be an important gap in your healthcare coverage.

1 "Medicare & You," Centers for Medicare & Medicaid Services, 2024. 2 "Aging changes in teeth and gums", medlineplus.gov, 4/17/2022. 3 American Dental Association, Health Policy Institute, 2020 Survey of Dental Fees, Copyright 2020, American Dental Association.

DENTAL Insurance

from Physicians Mutual Insurance Company

Call for a **FREE** Information Kit!

1-855-994-5164

Dental50Plus.health/Laprensa



Product/features not available in all states. Contact us for complete details about this insurance solicitation. To find a network provider, go to physiciansmutual.com/find-dentist. This specific offer not available in CO, LA, NV, NY - call 1-800-969-4781 or respond for a similar offer in your state. Certificate C254/B465, C250A/B438 (ID: C254ID; PA: C254PA); Insurance Policy P154/B469, P150/B439 (GA: P154GA; NY: P154NY; OK: P154OK; TN: P154TN). 6247-0324

Happy Birthday Claudia

By Ramon Chapa, Jr.

Salvador Flores held an amazing Birthday Celebration for his fiancée Claudia Leo's attended by Family and close Friends! The highlight of course was the Mariachi Performance!





**Tú que
siempre le
recuerdas
todo.
Recuérdale
vacunarse.**

Las vacunas actualizadas son la mejor defensa para tus seres queridos mayores contra las peores consecuencias de la gripe, el COVID-19 y el VRS.

Las vacunas son seguras y los doctores las recomiendan.

Tú, que siempre haces lo mejor por ellos, ayúdalos a vacunarse hoy.

Empieza en [vacunas.gov](https://www.vacunas.gov)

**ARRIESGA MENOS.
HAZ MÁS.**

Ponte las vacunas de la temporada



Pagado por el
Departamento de
Salud y Servicios
Humanos de EE. UU.